

Built: 1907-1909
 Built By: Canadian Pacific Railway
 Structure: Cement

Current Owner: Canadian Pacific Railway
 Original Use: Train Bridge
 Current Use: Recreation Bridge

Architectural

The structure of the CPR Bridge off of Reeves road is very unlike any of their other railway bridges. However, it is similar to the Hole in the Wall on Hwy 12 as it is a poured concrete parabolic bridge. The bridge crosses over a stream which may have backed up in the spring when the bridge was put in. Therefore, the reason for having a concrete bridge would be for durability, as wood would have rotten and maintenance would have been high. The cement bridge is old and is noticeable in Figs 2 & 3, as the cement is beginning to crumble along the edges and fall away. As seen in Fig 1, the bridge is entirely made of cement and is arched with steel support rods running through for the cement to hold onto.

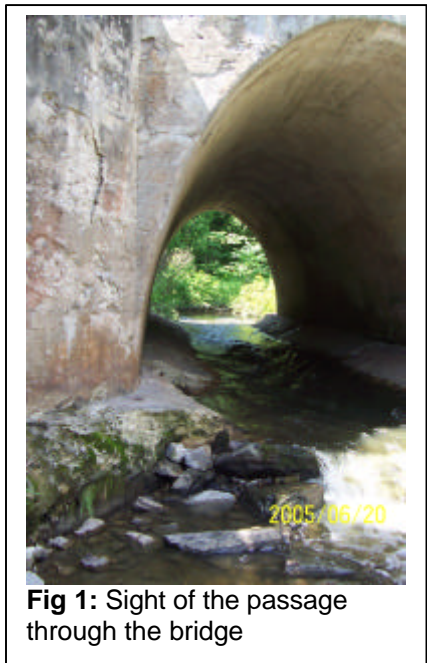


Fig 1: Sight of the passage through the bridge

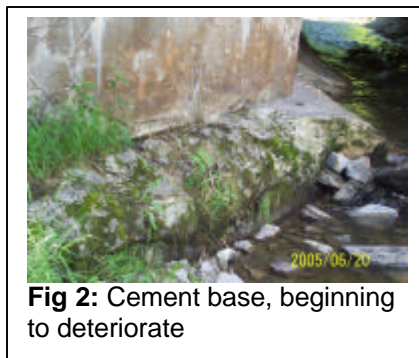


Fig 2: Cement base, beginning to deteriorate



Fig 3: Top of bridge structure

Historical

The Canadian Pacific Railway Company decided that in 1903, new rail line links were required because of the high demand of wheat across the province. In April 1905, the CPR chose a new terminal site on Georgian Bay opposite the community of Victoria Harbour later known as Port McNicoll. In 1907, a construction contract was given to build the new site on Georgian Bay. The railway link that was being built was called The Georgian Bay and

Seaboard Railway and it ran from Port McNicoll to Dranoel (north of Millbrook). The Port McNicoll station became the primary harbour for the CPR when all passenger and freight operations were transferred from Owen Sound. This created more volume over top of the bridge, making it even more practical for it to be made out of concrete instead of wood. The railway line and bridge was abandoned in 1987, all rails have been removed and the railway line is now used as a recreational trail. These rail lines lead to the Hole in the Wall on Hwy 12 and the Hogg Bay Trestle Bridge which was torn down. The railway ran across the country through the concession roads because it was faster for the grain to be transported.